

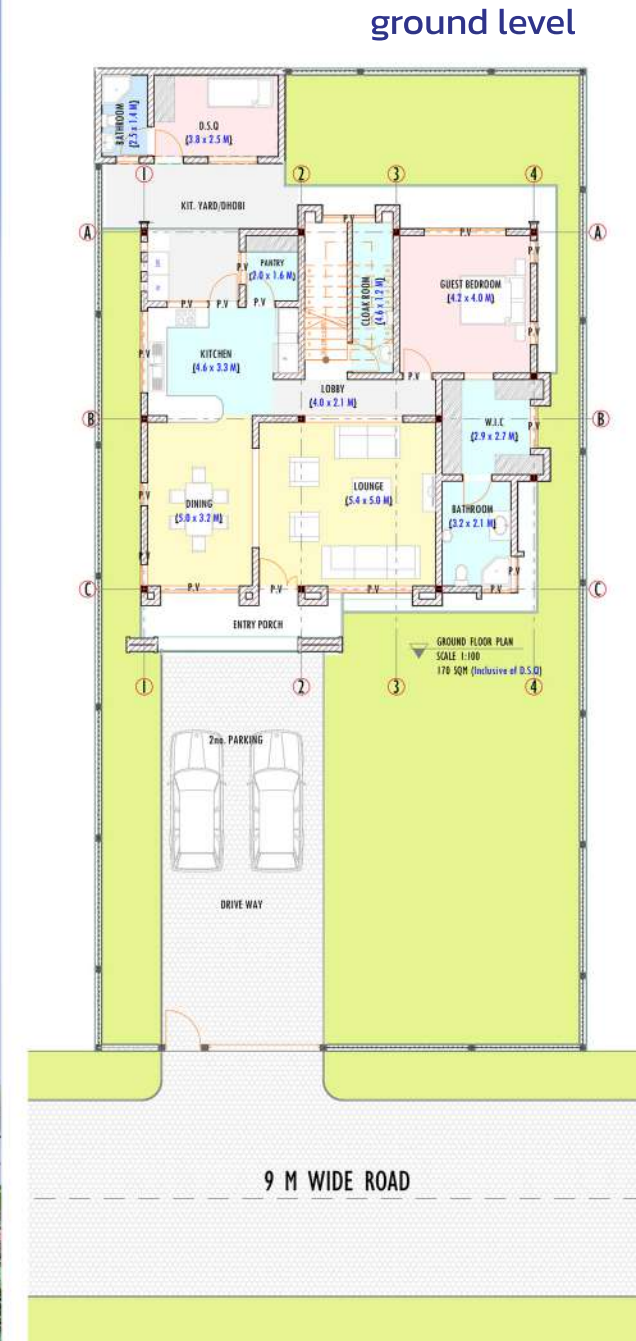


HERENCIA
Heartland of Good Living



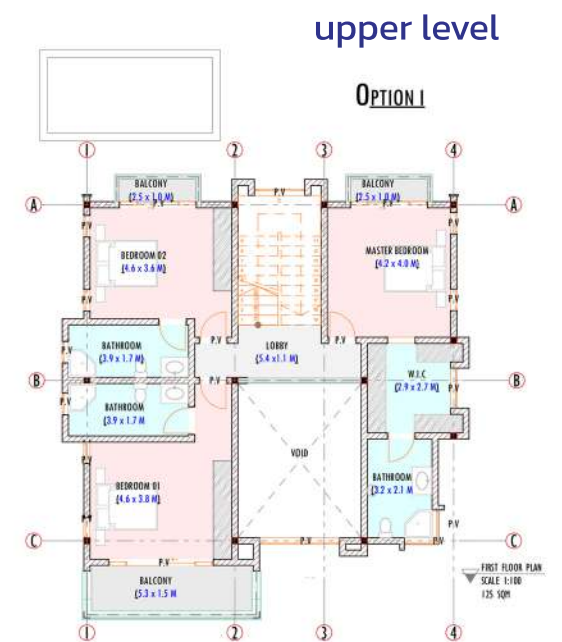
HOUSE TYPOLOGIES





The Avila typology is a modern flat roof design. This concept borrows much of the Malaga design, only that it comprises 5 delightfully spacious bedrooms, all en-suite. The provision of extended-height glass for both windows and doors with plenty of natural light enables the user to interact with the vibrant street outlook. The sprawling open-plan kitchen acts as a link to the dining, lounge, and kitchen yard at the back.

The total area is 270 sqm; the ground floor is -150 sqm and the upper floor is 120 sqm. The Avila typology sits on 1/8 of an acre, with a ground coverage of 33%. The approximate cost of construction is Ksh. 7.5 m to 9.5 m.





Huesca



This is a two-story house with a classic, traditional design. The exterior is stucco painted or natural stone, with a pitched roof. The front of the house features a covered porch with columns or pillars and a symmetrical facade. The interior space is divided into rooms with defined functions, such as a formal living room, dining room, and study room. The overall effect is a warm and inviting space that reflects a timeless, classic aesthetic.

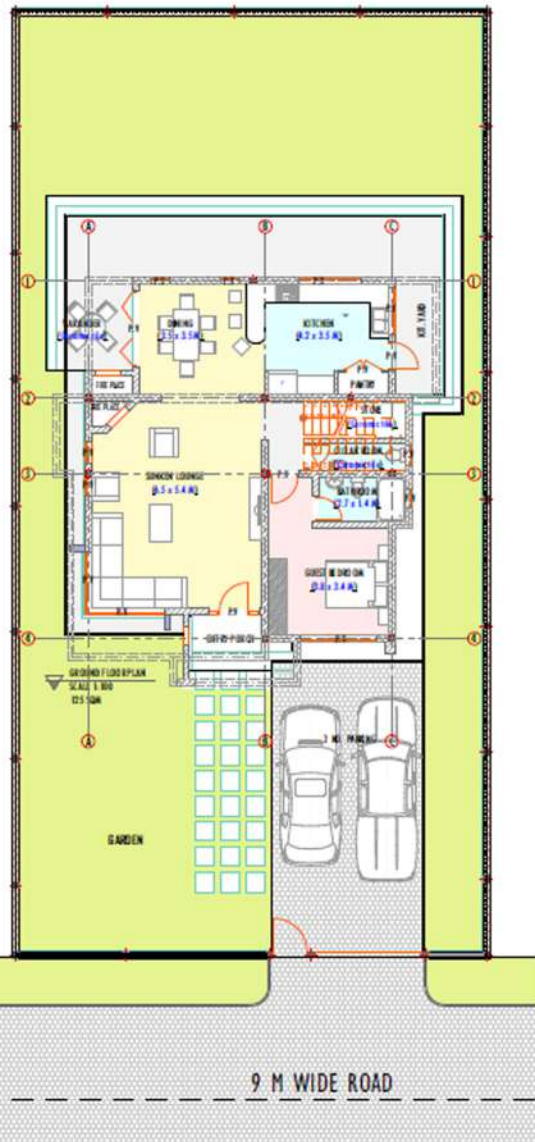
The total floor area is 295 sqm; the ground floor is 170 sqm and the upper level is 125 sqm.

The cost estimate for construction is Ksh.10 m – 13 m.



Málaga

ground level



upper level



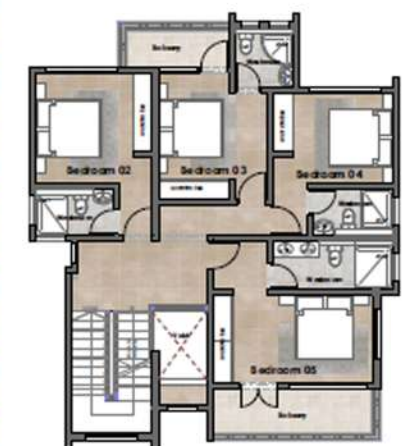
The Malaga typology is a modern flat roof design sitting on 1/8 acre with a ground coverage of 37%. It comprises 4 delightfully spacious bedrooms. It has been inspired by the serenity of the environs to enable the user interaction with the outside, it boasts of extended big glass for both windows and doors with plenty of natural light and vibrant street outlook. Not only that, but it also has the double volume space that connects the lounge with the rooms on the upper floor and a sprawling open kitchen plan that link to the dining/lounge, kitchen yard and the manicured lawn to the back.

The total area is 295 sqm; the ground floor is 170 sqm and the upper floor is 125 sqm.

The approximate cost of construction is Ksh. 8.5 m – 10 m.

Málaga





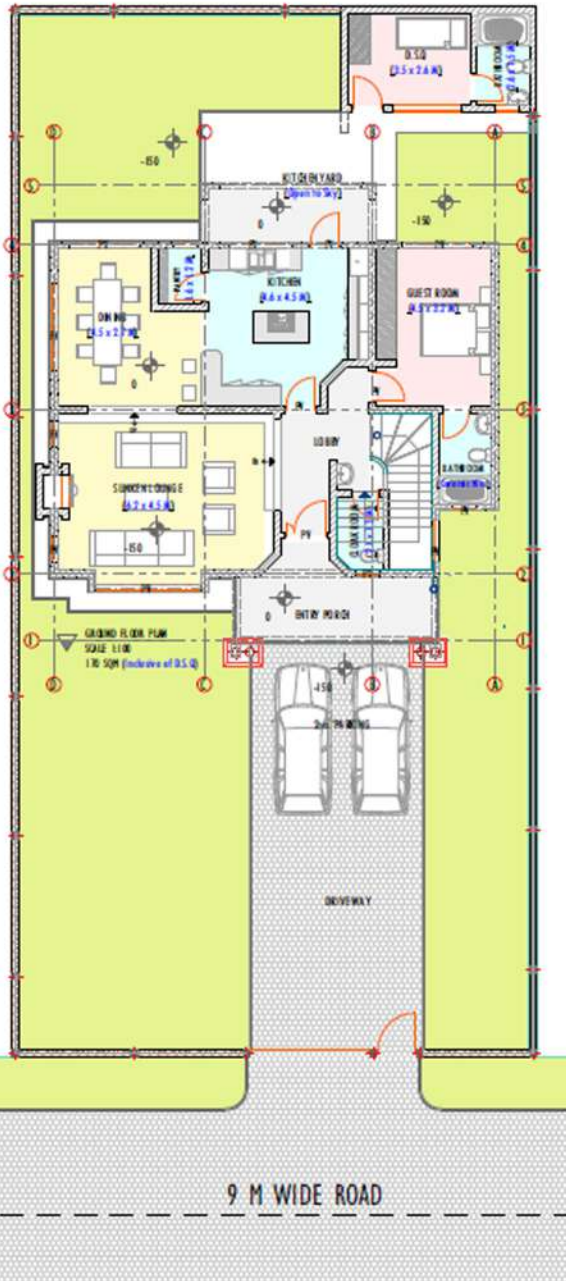
Upper Level
Area - 105m²
Total Area - 230m²

Vigo has a flat roof, large windows, and an open floor plan with minimal partition walls, allowing for plenty of natural light and a feeling of spaciousness. The exterior is finished in neutral colours, such as white or grey, and may feature contrasting accents, such as natural stone. Overall, the modern style is sleek, contemporary, and designed for the needs of modern living. It has a guest room on the ground floor, 4 bedrooms on the upper level and a terrace roof.

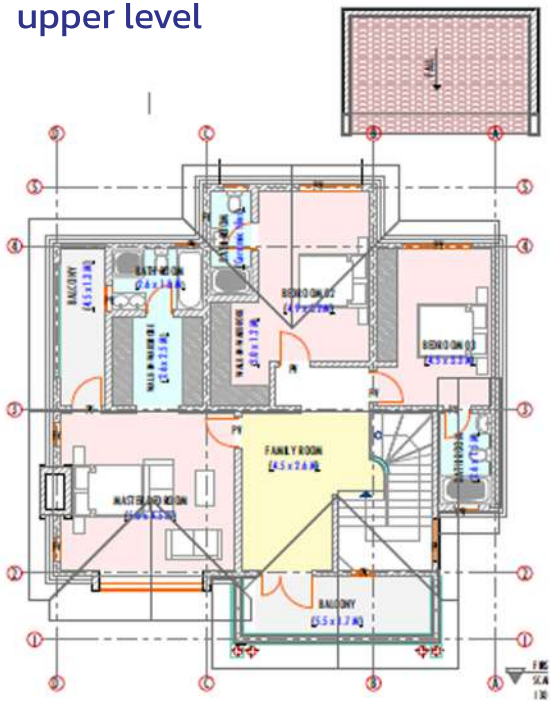
The total floor area is 230 sqm; the ground floor is 125 sqm and the upper level – is 105 sqm. The cost estimate for construction is Ksh.8 m – 10 m.



ground level



upper level



Toledo typology is a contemporary-pitched roof design. Its typology comprises 4 delightfully spacious bedrooms, all en-suite. It boasts a spacious lounge and dining room with big windows that allow natural light within the habitable space. The long-height glass window at the stairwells lights up the family room that brings ambience and life to the space from outside. It also has an attic floor (optional) that adds more space to this unit and can be used as a gym area/ study area.

The unit's total area is 300 sqm; ground floor -170 sqm and upper floor and first floor – 130 sqm. Toledo typology sits on 1/8 of an acre with a ground coverage of 37%. The approximate cost of construction is Ksh. 9 m to 11 m.

Toledo



Palma

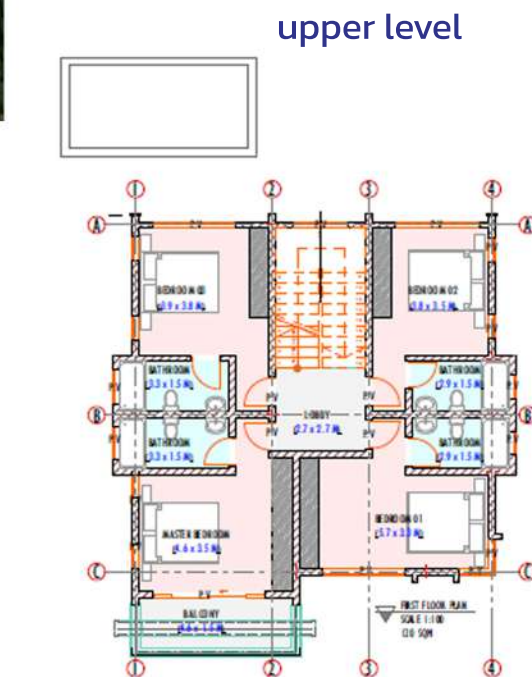
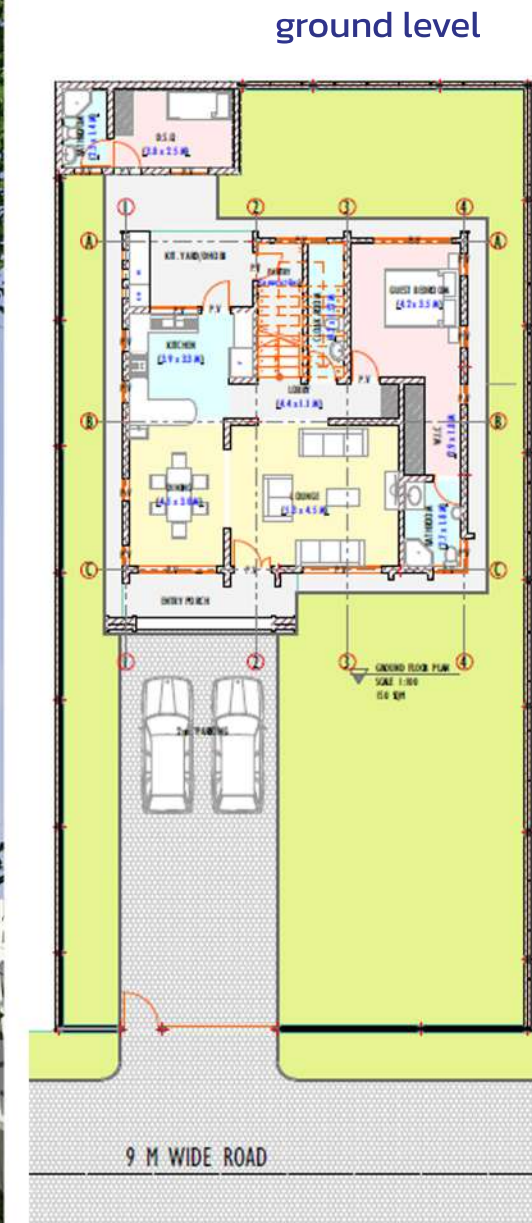


This is a multi-level house with a minimalist design inspired by sculptural design. The house features large windows that let in plenty of natural light and provide expansive views of the surrounding landscape. The interior space is open, with a sleek modern kitchen and a dining area that opens out onto a terrace. The overall effect is a bold and contemporary space that reflects the latest in modern design.

Total area is 305 sqm; ground floor is 165 sqm and upper level is 140 sqm. The cost estimate for construction is Ksh. 10 m – 13.5 m.



Segovia

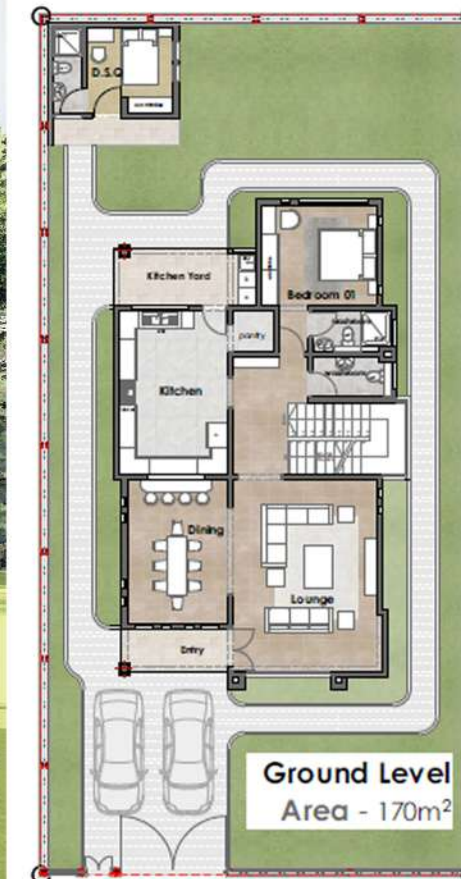


The Segovia typology is a modern flat roof design. It comprises 4 bedrooms that are delightfully spacious and all en-suite. It boasts a spacious lounge and open kitchen that opens to the manicured lawn on the yards, as well as a rooftop terrace with panoramic views of the entire estate. Furthermore, it also comprises extended big glass for the windows and doors with plenty of natural light and estate views.

The total area is 250 sqm; ground floor –125 sqm and upper floor-125 sqm. The Segovia typology sits on 1/8 of an acre, with a ground coverage of 36%. The approximate cost of construction is Ksh. 6.9 m to 9.5 m



Melilla



This is a 2-storey house with a modernist design that emphasizes clean lines and minimalist details. The exterior is finished in a combination of white stucco and natural stone, creating a striking contrast. The house features a double-volume lounge with a large glass window that provides natural light to the interior spaces.

The living area is open and spacious, with a sleek modern kitchen and a dining area. The bedrooms are located on the upper level, each with a private balcony. The overall effect is comfortable and inviting spaces.

The total floor is 270 sqm; the ground floor is 170 sqm and upper level – 100 sqm. The cost estimate for construction is Ksh. 9 m – 12 m.



HERENCIA
Heartland of Good Living



Lugo



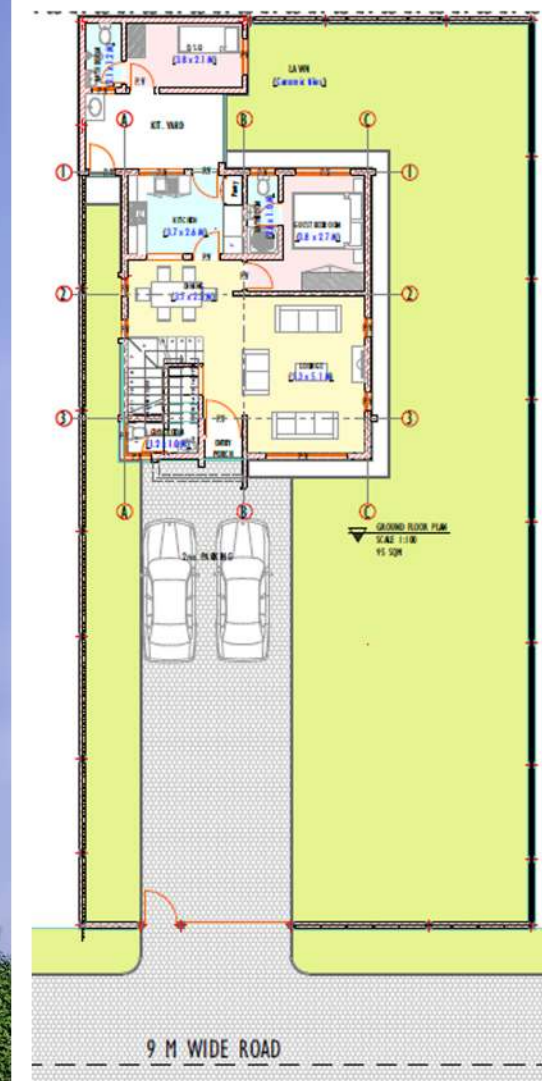
This is a two-story house with a combination of traditional and modern features. The exterior is finished in stucco paint and stone, with a pitched roof and large windows, giving it a classic and timeless look. The front of the house features a more modern design, with a large glass wall that brings in natural light and creates a striking contrast with the more traditional elements. The interior space is open and airy, with high ceilings by the dining area and an open floor plan that incorporates a modern kitchen and living space. The overall effect is a beautiful blend of classic and contemporary styles, creating a space that feels both warm and inviting and fresh and new.

Total area is 290 sqm; ground floor is 160 sqm and upper level is 130 sqm. The cost estimate for construction is Ksh.10 m – 13 m.

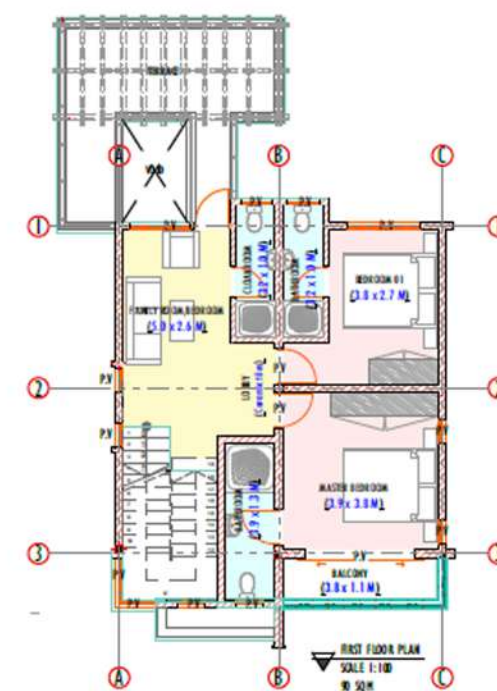




ground level



upper level



Soria typology is a modern flat roof design. This concept is smaller in size than the rest of the typologies. It comprises of 3 bedrooms that are delightfully spacious, all en-suite. Provision of extended corner window at the staircase that allows plenty of natural light to the family roof on the upper floor as well as to enable the user to interact with the vibrant street out look

The unit can either have an extra bedroom on the first floor or a family room depending on the user's needs.

The unit ground floor area is 5 m2 first floor of 90 m2 and a total area of 85 m2

The Approximated cost of construction is 5.5m to 6.5m



HERENCIA
Heartland of Good Living